

LOCATION



The Educational Centre "Kloster Banz" was founded in 1069 as a Benedictinean monastery. During the following centuries it was rebuilt and extended by Johann Dientzenhofer and Balthasar Neumann.

By the nineteenth century it had become one of the biggest monasteries in Bavaria. It is located in the northern part of Bavaria on a hill overlooking the small town „Bad Staffelstein“, close to Bamberg. It is easy to reach by public transportation.

BY PLANE:

Travel to Frankfurt, Munich or Nuremberg International Airports. Continue to Lichtenfels by train or directly to Banz by rental car.

BY TRAIN:

Travel to Lichtenfels via Nuremberg, Würzburg or Bamberg. Transportation between Lichtenfels Station and Banz Monastery will be provided.

BY CAR:

You can take different Highways (A 70, A 73) via Bamberg to Banz. From the Highway A73 take exit "Bad Staffelstein-Nord" and follow the signs to „Kloster Banz“.

See also the site map on the conference web-pages.

CONTACT

Light-Harvesting Processes
c/o W. Richter
Experimental Physics IV
University of Bayreuth
D-95440 Bayreuth
GERMANY

Phone: +49-921-55-4004
Secretary: +49-921-55-4001
Fax: +49-921-55-4002
e-Mail: lh@uni-bayreuth.de

DEADLINES

Scientific contributions: Dec. 1, 2010
Latest registration: Feb. 1, 2011
Final conference abstract: Feb. 1, 2011
(see style file on webpage)

INTERNET

Contribution submission, online registration, technical program and additional information are available at

www.lhp-bayreuth.de

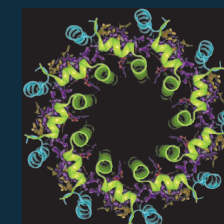
Please inform your colleagues and coworkers about this conference!

The organizers gratefully acknowledge financial support from the "Emil-Warburg-Stiftung", the "Bayreuther Institut für Makromolekülforschung" and from the

OBERFRANKEN
STIFTUNG



An Interdisciplinary Conference on Novel Concepts of Light-Harvesting Phenomena and Related Topics



Light-Harvesting Processes

April 10 – 14, 2011
Banz Monastery, Germany



UNIVERSITÄT
BAYREUTH

www.lhp-bayreuth.de

INVITATION

The organizing committee cordially invites you to attend the interdisciplinary conference **Light-Harvesting Processes** from Sunday, April 10 to Thursday, April 14, 2011. Site of the conference is the Educational Centre in the historic monastery "Kloster Banz" (close to Bamberg). It is a beautiful historic location (with 900 years of history) overlooking the valley of the river Main.

The total annual global energy consumption is set at least to double from its current level by 2050 and it appears that mankind urgently needs to find new ways to produce clean, renewable sources of energy that do not produce green house gases. Given the fact that the amount of solar energy that hits the Earth every hour meets the world's annual energy requirements, it becomes clear that solar driven energy production represents a sustainable long-term solution for that problem. The various natural light-harvesting systems in photosynthesis, which might serve as blueprints for the construction of novel solar cells based on organic matter, testify that organic materials are very well suited to harvest solar energy. In contrast to classical semiconductor materials they offer several advantages such as light-weight, self-assembly, and low-cost production to mention a few.

The development of future organic-matter based light-harvesting technologies requires research with input from biology, chemistry, physics and engineering. Aim of the conference **Light-Harvesting Processes** is to gather about 100 scientists from various backgrounds who are working in the field and to provide a platform for interdisciplinary communication and the exchange of concepts.

SCIENTIFIC PROGRAM

ORGANIZING AND PROGRAM COMMITTEE

Jürgen Köhler (Physics, Bayreuth)
Richard Cogdell (Biology, Glasgow)
Anna Köhler (Physics, Bayreuth)
Stephan Kümmel (Physics, Bayreuth)
Hans-Werner Schmidt (Chemistry, Bayreuth)
Mukundan Thelakkat (Chemistry, Bayreuth)

The scientific program will consist of invited lectures, contributed talks and posters.

CONFIRMED INVITED SPEAKERS

Robert Blankenship (St. Louis, USA)
Jean-Luc Brédas (Atlanta, USA)
Richard Friend (Cambridge, United Kingdom)
Hideki Hashimoto (Osaka, Japan)
René Janssen (Eindhoven, The Netherlands)
Frederik Krebs (Roskilde, Denmark)
Thomas Moore (Tempe, USA)
Jenny Nelson (London, United Kingdom)
Gregory Scholes (Toronto, Canada)
Rienk van Grondelle (Amsterdam, The Netherlands)

For an update on the program please visit the conference web-pages.

www.lhp-bayreuth.de



GENERAL INFORMATION

REGISTRATION

Online registration will be available on the conference web-pages at

www.lhp-bayreuth.de

For additional information please send a note to

lhp@uni-bayreuth.de

ACCOMMODATION

All participants will be accommodated in the main building of the monastery "Kloster Banz" in modern single and double rooms. During the conference, full internet and FAX access is available.

CONFERENCE FEE

The conference fee includes accommodation and 4-day full board (breakfast, lunch, dinner, without beverages), coffee (tea) during breaks and the abstract booklet. A conference excursion will be offered. Tickets for the excursion will be available at the registration office.

For cancellation before March, 15, 2011 a service charge of 50 EUR will be deducted from the refund. No refunds can be made for cancellations received after March 15, 2011.

Payment	before Febr. 15	after Febr. 15
Participant (regular fee)		
single bedroom	660.– EUR	690.– EUR
double bedroom	630.– EUR	660.– EUR
Students fee		
double bedroom	510.– EUR	540.– EUR

all prices per person